

# The Villager

February 2025 Volume 54 No 1

The community newsletter for Mapledurwell  
Up Nately, Nately Scures and Newnham

## INTRODUCING DEVOLUTION AND LOCAL GOVERNMENT REORGANISATION

To separate the two concepts

Devolution – ie all areas of England are to be part of regional Strategic Authorities with an elected Mayor.

'Local Government Reorganisation' which will abolish the two-tier structure of County and District so all authorities are Unitary, and will also require existing smaller unitaries to be part of larger entities.

Both are Government requirements as per the December 2024 White Paper – and both are happening.

### Devolution proposals

- i A 'Hampshire & Solent' Combined Authority will comprise the areas presently covered by Hampshire County Council – which is all two-tier – and Southampton and Portsmouth City Councils and Isle of Wight which are each separate Unitary Councils.
- ii All parties agreed to submit a request for inclusion in Government's Priority Devolution programme. HCC agreed at its Full Council meeting on Thursday 9th January, Cabinet of Friday 10th, and the joint request was submitted by the deadline of Friday 10 January.  
Part of the rationale for Priority Devolution is that it will enable 'Reorganisation' to come (a bit) later.
  - a With this request came agreement that County elections scheduled for May 2025 would be postponed for a year, and that the Combined Authority would submit plans for Local Government Reorganisation (into Unitary Councils) by Autumn this year.
  - b On 05 Feb, Government confirmed Hants & Solent is one of six areas accepted for Priority Devolution; others being Cumbria, Cheshire & Warrington, Norfolk & Suffolk, Greater Essex, Sussex & Brighton. Government also confirmed that there will be no Hants County elections this year, and a consultation will be published shortly.**
  - c The aim will be for the Combined Authority to be in place by April 2026 and the Mayor elected in May 2026.
- iii The Combined Authority will have a seat on the Council of Regions & Nations; will have access to long term strategic funding; will have strategic responsibility for – transport & local infrastructure; housing & strategic planning; economic development & regeneration; environment & climate change; skills & employment support; health & public service reform; public safety, eg Police & Crime Commissioner functions, fire & rescue authority functions.

### Local Government Reorganisation

- i Within the new Hants & Solent combined authority, new Unitary Councils must be organised. As ii.a above, proposals for the reorganised Councils are to be submitted to Government by the Autumn.
- ii Local Government Reorganisation has much unknown and for debate.
- iii The White Paper says Unitaries should comprise 500K - 1.2M people.  
It has been suggested that a 'Hampshire Unitary' might include Basingstoke & Deane, Hart, Rushmoor, East Hampshire and Test Valley.  
(This would be similar to the 'Heart of Hants' Unitary discussed in 2016, except the 2016 version included New Forest and not East Hants.)

*The next stage will be the public consultation.*

## NEWNHAM 900 COMMUNITY CELEBRATION

Thanks to all for feedback so far; the central Newnham 900 Event has been rescheduled to

**SATURDAY 20TH SEPTEMBER 2025**  
PLEASE SAVE THE DATE

Venue: Newnham Green

POTENTIAL SCHEDULE OF EVENTS

2-5pm

**Arena displays** by re-enactors – Normans; Tudors (Falconry Display); Civil War

**'Fête' attractions** - Re-enactors - Tudor musicians - Archery Demo - Brass Band - Mobile Belfry - Stocks - Morris Dancers - Country Dancing – Body bubble wrestling - RBL Corps of Drums - Bouncy Castle

7pm – **Medieval Banquet** (ticketed event).

This is an event for the whole Parish, led by the Newnham 900 team.

**PLEASE RESPOND** to the (very) short surveys or contact via [clerk.newnham@gmail.com](mailto:clerk.newnham@gmail.com)

*More info on Newnham & Nately Scures page*



## WHEN SHOULD YOU RESCUE A HEDGEHOG?

*Emily Harper, Nottingham Trent Uni*

Hedgehogs are the most rescued wild animal in the UK. When do they need help, and when best to leave alone?

Our spiky friends are commonly seen snuffling around gardens at dusk. In the past, the public was advised to pick up underweight hedgehogs in autumn and keep them inside until spring, as it was thought that they couldn't survive hibernation.

Ecologists now know that smaller hedgehogs can survive the winter.

In fact, with climate change making UK winters warmer and wetter and temperatures remaining higher throughout autumn, hedgehogs are remaining active for longer. Some are not hibernating until as late as December or January, which gives them plenty of time to gain weight.

There are over 300 hedgehog rescues in the UK, but in autumn and winter, many of them are full and unable to take admissions. One study in 2006 estimated that there were 40,000 hedgehogs in rehabilitation in the UK alone. Small but healthy autumn juveniles, can take time to

# Mapledurwell & Up Nately

## NOTES FROM JANUARY'S PARISH COUNCIL MEETING

### UP NATELY COFFEE MORNING

Up Nately coffee morning will be at Netherby Cottage, 10-12, on Friday 7th March. Call 01256 760216

#### Devolution & Local Government

**Reorganisation** brief discussion on Government requirement and County response: to await outcome of Priority Devolution request, and consultation.

**Budget & Precept 2025/26** Agreed a Precept request of £12,735 which equates to £39.86 per Band D household, annual increase of £1.90. (Noting this will be halved for Band A, and double for Band H.)

Precept income has been supported in the last few years by CIL (Community Infrastructure Levy) funding which has enabled maintenance projects. The Precept itself has remained relatively low and reserves are needed to continue to maintain Parish assets.

**Tennis courts** to be professionally cleaned w/c 27 January, prior to Spring patching and re-coating. The courts can be used in the meantime but will need to be closed for a few days once work is underway.

**To record thanks to County Cllr Elaine Still** for grant funding of £1K from her devolved budget toward the tennis courts project.

**Village Hall grounds** maintenance to-do list – to engage the Community Payback team.

**Allotments report** All plots again now taken. Maintenance work scheduled for February to clear paths and attend to storm damaged trees. Jobs list for coming year also includes repairs to shed and shed decking, and to gate and fencing.

**Highways** Water flowing across the Frog Lane / Greywell Road junction from apparently blocked gully is long term logged on HCC website.

**Footpaths update** Stile on FP11 is repaired with thanks to landowner.

**Parish Lengthsman tasks** Grip clearing Saturday 14 December from M3 to Andwell; ditch further dug out at corner of Greywell Road and Tunworth Road.

The Parish has insufficient Lengthsman hours to clear all the grips above Mapledurwell on Tunworth Road (South). Long channels over six feet deep were cleared a couple of years ago; but much more work is needed, more than available hours can cover.

**Tunworth Road pond and grips** Noted that the balancing pond half way up Tunworth Road (South) was originally dug by HCC Highways to take flood water, and was cleared by

Highways in September 2024 as part of their 'Planning Maintenance Programme'; but it continues to be overwhelmed in heavy rain.

County Cllr Elaine Still is engaging with Highways Engineers regarding the grip clearing higher up on Tunworth Road – and relating to similar situations elsewhere where grips were not previously logged by Highways, but now are at least on their three-year maintenance plan.

Cllr Still and Highways Engineer have also responded directly to neighbour complaints re the flooded road. With thanks to John Maclean for pursuing.

**Salt bin** map and gritting route, see <https://maps.hants.gov.uk/highways/saltroutes/>

Noted the local HCC salt bins are full.

#### NEW NPPF AND LOCAL PLAN UPDATE

Government's new National Planning Policy Framework of Dec 2024 has immediate effect with regard to day-to-day planning (development management) decisions, including policies on land supply.

**Land supply** – As per NPPF Para 78 'Maintaining supply and delivery', the required land supply is again five years with a 5% buffer, and a 20% buffer (ie six years) where there has been significant under-delivery of housing over previous three years.

BDBC's Authority Monitoring Report (AMR) of Dec 2024 showed a land supply of 4.2 years as per the 01 April 2024 Standard Method figure of 828 dwellings per annum.

But also, as from 1 July 2026, a 20% buffer – six years' land supply – is needed (NPPF para 78c) where a Local Plan has been adopted within the last five years and examined against a previous version of the NPPF, and its adopted housing figure is less than 80% of current requirements.

Thus there is no 'win' with regards to land supply under any BDBC Local Plan Update scenario that may potentially have been available.

The only means for BDBC to again achieve its required land supply – and have up-to-date Policies (on all issues) – is to have a new Local Plan adopted in compliance with the new NPPF.

**New Standard Method** requirement is to build 1,127 new homes per year during the Local Plan period to 2040 – an extra c4.5K dwellings.



#### MAPLEDURWELL & UP NATELY

**VILLAGE HALL AGM** was held on January 23rd. The committee reported the number of bookings of the hall continues to be good, with ongoing Pilates, Children's Dance and numerous NCT (National Childbirth Trust) classes taking place during week-day evenings. During school term time the Monkey House Nursery continue as the primary occupant.

It was noted that the recent improvements to the hall – heating and redecorating – have been appreciated by all who use the hall. The committee agreed the hall kitchen is in need of a total refurbishment and funding was approved for such.

The various Hall Events have been well supported. However any suggestions from villagers as to what future events they would like to see, are invited, as indeed are more people to join the Village Hall Team. So if you have some ideas and want to help – contact [tim.lewis@live.com](mailto:tim.lewis@live.com).

The Team want to thank all within our community who support the Village Hall.

BDBC launched a new Call for Sites on 06 January to 5pm Mon 17 February.

Whitchurch Town Council has sent an open letter calling on BDBC to continue to Reg 19 by 11 March under transitional arrangements and with additional sites.

See *December message from Cllr Andy Konieczko on facing page*. To await publication of new SHELAA list (Strategic Housing and Economic Land Availability Assessment), and further news from BDBC after 17 February as to how they might proceed.

#### Next Parish Council meeting

7pm, Wednesday 19th March.

#### Diary Date PARISH ASSEMBLY

Wednesday 21st May.

*Hedgehog rescue: cont from front page*

get up to a healthy release weight and take up space that could be used to treat an unhealthy or injured hog.

#### WHEN YOU SHOULD INTERVENE

Hedgehogs are nocturnal. As an exception in the summer months, pregnant hedgehogs are occasionally seen building nests during the day, but in the autumn and winter, the only hedgehogs active in the day are likely to be unwell.

Any injured hedgehog will need rescuing. They may be dragging a leg, bleeding, wobbling or walking in circles. Body condition is more important than weight alone. Hedgehogs that are pointed at the tail end and have their hips or shoulders protruding are in poor condition and these are the ones most in need of rescue.

Gardens can be a great habitat for hedgehogs. Creating areas that offer wild food – log piles, long grass and compost heaps – will enable them to dig for worms, bugs, beetles and other insects. Don't bag up leaves, piles of them can attract insects and make great bedding for hedgehog nests. All wildlife needs fresh water, so make sure to put out shallow bowl.

If you see an injured hedgehog or find one out in the day, please pick it up with a towel and place it in a high-sided plastic box with a hot water bottle. Contact your nearest rescue for advice or take the animal to your nearest vet. Find a rescue at [www.helpwildlife.co.uk](http://www.helpwildlife.co.uk)

Remember: hedgehogs that are out at night and appear healthy are best left in the wild.

#### PARISH PLANNING APPLICATIONS

**24/02833/HSE** (Grant 28 January) Field House, Tunworth Road. Demolition of single storey element and conservatory. Two storey side, single storey rear extension. Alterations to fenestration and internal alterations.

**24/02523/HSE** (Grant 24 December) Lanterns, Tunworth Road. Part demolition of existing conservatory and erection of single storey flat roof extension with roof lantern.

**24/02372/HSE** (Pending 21 October) The Old School House, Greywell Road, Up Nately. Erection of side and rear extension, new front entrance porch, replacement windows / doors and demolition of the existing garage.

**24/02283/ROC** (Scheduled for Development Control Committee of 12 February) Nunnery House, Tunworth Road. Variation of condition 13 of 21/00427/FUL (Erection of four-bed dwelling etc) to change from septic tank or cess pit to water treatment plant.

**24/02002/FUL** (Pending 18 Sept) Nunnery House, Tunworth Road. Demolition of barn and erection of one new dwelling.

**24/01354/FUL** (Pending 24 June) Gamekeepers. Hardstanding for access to the cesspit, for day lorry deliveries; also to serve as additional

#### NEW NPPF (NATIONAL PLANNING POLICY FRAMEWORK) AND INCREASED HOUSING ALLOCATIONS

*emails from Cllr Andy Konieczko, Cabinet Member for Strategic Planning & Infrastructure, emailed to all Parishes on 13 December*

'Government has imposed a higher housing number on our borough as part of its changes to the national planning rules. We've been told that we must build 1,127 new houses each year during our next Local Plan period, up from 828 previously. This means finding space for around 4,500 more properties – on top of the 12,500 or so that we were already being asked to build over the 15-year lifespan of the next Local Plan.

'While we support Government's ambition to make homes more affordable, we don't agree that forcing councils to increase housing targets will achieve this aim. We've robustly told Government this on many recent occasions – through our official response to its consultation on the new planning rules; at meetings with the Ministry of Housing, Communities and Local Government; in discussions with our MPs; and through our partnerships with other councils – and are frustrated that it hasn't listened.

'We're unable to proceed with finalising the draft Local Plan we've been developing over the past 18 months and which went out to public consultation earlier this year. We've made it clear to the government that we wanted to finalise it as soon as possible so that our borough is protected from unwanted speculative development. It now appears that we'll have to go back a few stages to make sure that our Plan complies with new rules.

#### THE WAY FORWARD AND A NEW CALL FOR SITES

*Further email of 20 December...*

'We don't believe that this new higher target is right for our borough, but it looks like we have little choice but to accept it; the Government has made it clear that it'll step in if progress isn't made.

'Our focus is therefore on moving as quickly as we can – the sooner we get a new Local Plan, the sooner we have protection from speculative developers.

'We'll launch a call for sites on Monday 6 January. This will ask developers and landowners to come forward with land that could, potentially, be included in the Plan for future development. Submissions involving brownfield land will be particularly encouraged. The submissions that we receive will then be assessed in terms of whether they are suitable for future development.

*'Over the coming weeks, we'll clarify how we aim to progress with our Local Plan and start setting out a timeline to move forward under the new NPPF.'*

parking; plus 4x low-level, bat-friendly downlighters within landscaped margin. (Reduced scheme to 21/01777/RET)

**24/00756/FUL** (Pending 16 April) Land North of Parrotts, Greywell Road. Four detached dwellings, garages, access, parking, amenity space etc.

**23/02103/FUL** (Pending 18 August 2023) Land at Twine Rose Cottage, Heather Lane. Demolition of outbuilding; new dwelling with garage.

**22/02210/RET** (Pending 05 Aug 2022) Priory Farmhouse. Variation of Con 2 of 15/04301/FUL for continued use Class E children's nursery to 2032.

**PLANNING APPEAL APP/H1705/W/24/3347575** (in progress) Brockwell Paddock and Stable, Andwell Lane. Three dwellings and landscaping.

#### PARISH TREE APPLICATIONS

**T/00630/24/TCA** (Approve 21 January) Frog lane opposite Sakantha. T1- Ash, Fell. Leaning over road and ivy covered. Preventative felling before onset of Ash Dieback.

**T/00631/24/TCA** (Approve 21 January) Grays Farm House. T1- Cypress, reduce by 3-4m to previous reduction height of 8m. Cut back lateral growth to give 1-1.5m clearance from property. T2-Holly, Cut back to give 1-1.5m clearance from property.

**T/00624/24/TCA** (Approve 21 January) Street Record, Frog Lane. Tree works as detailed in tree condition and hazard survey to include felling and pruning works.

**T/00606/24/TCA** (Approve 07 January) Bidwells for Corpus Christi. Various roadside trees abounding roads and public rights of way. (See November *Villager* or BDBC website for full list.)

#### HAMPSHIRE POLICE RURAL TIMES MAGAZINE

Autumn/Winter 2024



<https://www.hampshirealert.co.uk/Alerts/A/225423/Rural-Times---AutumnWinter-2024-Edition>

# Newnham & Nately Scures



The United Parish

**ADVANCE NOTICE**

**Sunday 23rd March 4.00pm**  
(the weekend before Mothering Sunday)

**St Swithun's, Nately Scures**

## A Reflective Service

for those who do not feel able to join in with traditional Mothering Sunday services

Includes tea and cake after the service!



CLUBROOM HIRE Wifi available  
<https://newnhamclubroom.org.uk/>

To book tel 07802 972722 or email  
[bookings@newnhamclubroom.org.uk](mailto:bookings@newnhamclubroom.org.uk)

Supporting the Air Ambulance Service with a recycling station now sited in the Clubroom car park.

### CLUBROOM 'HANDYMAN'

The Clubroom is looking for someone interested in a paid 'handy-man' role.

Thinking this would be a local tradesman, or possibly retired person, with some availability to take on maintenance and repair tasks as they arise.

Please get in touch if you are willing to undertake minor jobs such as replacing door locks, attending to guttering problems and the like... Contact details above.

### ST NICHOLAS' 900

There's no historical record of when 'New Ham' first became a settlement but, looking to the origins of its stone church, the Norman arch has been dated to 1124-1125AD.

Thus St Nicholas' Newnham is officially 900.

#### NEWNHAM 900 COMMUNITY CELEBRATION

With this excellent reason for a party, an initial plan looked for a weekend in mid-June.

The Newnham 900 Team has begun making plans and is also tackling the myriad of forms which is a Lottery funding application.

THANK YOU to everyone who has responded to surveys so far. Due to a number of considerations, including timelines for grant applications,

**the main community event on the Green is rescheduled for SATURDAY 20TH SEPTEMBER PLEASE SAVE THE DATE**

A September date also ties in with England Heritage Open Days (12-21 September) and the Hampshire and the Island's Historic Churches Trust annual 'Ride & Stride' on Sunday 14th September.

ADDITIONAL EVENTS will be scheduled for the Spring and Summer, including local history talks, PLUS

SUNDAY 15 JUNE

- Bishop of Winchester is attending St Nicholas' church service 3-4pm (followed by tea and cakes);
- A commemorative walk along Church Path from Hook to St Nicholas'.

**A full outline of the planned activity will be given at the Parish Assembly on Monday 7th April in the Clubroom.**



### NEWNHAM COMMUNITY'S



December draw results are  
£100 - Tracey Elmer (49)  
£50 - David Hodson (56)  
£25 - Andy and Nicole Lowe (27)

January draw results are:  
£100 - Anonymous (44)  
(kindly donated to church funds)  
£50 - Jane and Peter Lumley (61)  
£25 - Penny and Al Richmond (31)  
*Thank you to all and congratulations to the winners Carolyn Bell*

### ST NICHOLAS' WOULD LIKE TO INVITE NEW MEMBERS TO JOIN

**the VCC (Village Church Committee)** to be involved in the running of the church within the community. Meetings are bimonthly usually on a Mondays 5.30-7pm.

The VCC is also in need of a minutes secretary, a role undertaken for many years by Joanna Bell.

If you can help, please contact Revd Debbie for further information [debbie@moretolife.church](mailto:debbie@moretolife.church)

**NEXT PARISH COUNCIL MEETING**  
Monday 24 March, 7pm in Newnham Clubroom, all welcome.

### PARISH ASSEMBLY MONDAY 7TH APRIL 7PM IN THE CLUBROOM

Speakers  
Alan Richmond for Newnham 900  
Pete West for HIWARG (Hants & Isle of Wight Amphibian & Reptile Group)  
Plus update on Devolution etc and Local Plans (BDBC and Hart).



## NEWNHAM CANDLEMASS 2nd Feb 2025



We have had a wonderful celebration of Candlemas today at St Nicholas' Newnham.

Candlemas was when Mary and Joseph took their tiny baby to the Temple in Jerusalem according to their customs. This small baby was recognised immediately and independently by two elderly people Simeon and Anna, as the Saviour of the world and was the answer to many years of faithful prayer.

Candlemas was also the medieval end of the Christmas Season and is the time when the churches candles are blessed for the coming year.



We have held our community 'candle blessing' this afternoon where we blessed people's candles for their own homes for the coming year as well as our new (and stunning) Paschal Candle which we will light for the first time on Easter Sunday 2025.

People shared their stories - one couple candle's were last used at their daughter's wedding; another lady's had been given to her that lunchtime as a housewarming present so had never been lit at all. The children joined in with making paper lanterns and colouring in prayer candles. A wonderful and special afternoon. Thank you for joining us.

May the light of Christ fall upon you and your loved ones and your homes.

*Rev Debz* The Reverend Debbie Veel, Curate, North Hants Downs Benefice

## HERITAGE OPEN DAYS 2025: 12 - 21 September

[www.heritageopendays.org.uk/about-us.html](http://www.heritageopendays.org.uk/about-us.html)

Established in 1994, Heritage Open Days is England's largest community-led festival of history and culture, involving thousands of local volunteers and organisations. Every September it brings people together to celebrate their heritage, community and history. Stories are told, traditions explored, and histories brought to life.

**BACKGROUND** In 1985 the Council of Europe set up European Heritage Days, to raise awareness and appreciation of Europe's cultural heritage, and the need for its care and protection. Today, 50 countries take part in their own way to highlight the diversity of heritage, and our intercultural links.

Heritage Open Days is England's contribution to the European Heritage Days.

*'Spanning the public, private and voluntary sectors... we are nationally supported but locally led - working with organisations and individuals across England to explore and celebrate our diverse heritage.'*

**December 2024 NPPF** (National Planning Policy Framework) and **BDBC's Local Plan Update** – see *Mapledurwell & Up Nately* pages.

**Hart's Local Plan Update** – Hart's Cabinet meeting of 02 January officially agreed to launch a full Local Plan Update process. The Hart Adopted Local Plan is five years' old on 30 April and until then maintains a five-year land supply as per its adopted housing figure of 432 per annum (ref NPPF paragraph 78). From 1st May onwards, based on its new Standard Method figure of 742, Hart will no longer be able to show the required five-year land supply.

## PARISH PLANNING APPLICATIONS

**25/00187/ROC** (Validated 30 Jan) Land at Blackstocks Lane. Variation of condition 1 to include boot room and changes approved under 24/02561/ROC, removal of condition 17 and additional information to satisfy conditions 2, 3, 14, 15, 16, and 18 of 24/00715/FUL for erection of 1no. dwelling with associated garage, landscaping and a new access (part retrospective).

**24/02978/ROC** (Validated 20 Dec) Land at Blackstocks Lane. Variation of condition 1 and discharge of con 4 of 22/02643/FUL (erection of 1 no. dwelling with associated landscape and parking) addition of rooflights dormer window, additional rooms in roof, elevational changes and change to site layout (part retrospective).

**24/02813/LBC** (Validated 09 Dec 2024) Elm Cottage, Ridge Lane, Newnham. Installation of replacement front door and door frame.

**24/02797/FUL** and **24/02798/LBC** (Validated 29 Nov) Newnham House, Ridge Lane. To form a separate dwelling with extension to the Coach House plus creation of amenity space, car parking etc.

**24/02561/ROC** (Grant 06 January) Land At Blackstocks Lane. Variation of Condition 1... of approved 24/00715/FUL (erection of one dwelling with associated garage, landscaping and a new access, part retrospective). *Includes changes to approved plans to add a sixth bedroom in roof with gable and roof light.*

**24/02494/HSE** (Grant 16 Dec) Newnham Lodge, Tylney Lane. A two-storey front and side extension following partial demolition of existing extension. Remove porch, reduce height of front bay.

**24/00882/LBC** (Pending 16 April) Nightingale Cottage, Heather Row. Demolish south entrance porch, changes to fenestration; new porch with access ramp in revised position. Alterations to conservatory, replace glass roof with tiled. Internal / external alterations.

**23/02722/FUL** (Pending 02 Nov 2023) Land East Of Keepers, London Road. Three new detached dwellings with new access, parking, drainage, landscaping.

## PARISH TREE APPLICATIONS

**T/00611/24/TCA** (Tree officer objection) Newnham Lodge, Tylney Lane. Multi-stem Laurel, reduce by 2-3m. Liquid Amber, reduce by 2-3m and attach brace. 5x Holly, reduce to 6ft.

**T/00578/24/TCA** (Approve 07 Jan) Tithe Barn. T1 Bay, fell to ground level.

**T/00560/24/TCA** (Approve 06 January) Tally-Ho, Newnham Road. 'A' Damson x4/5, lateral crown reduction by up to 3m; 'B1' Apple, crown reduce by 1m and remove broken branch; 'B2' Apple, crown reduce by 1.5m, light thinning, remove dead branches; 'C' Pear, crown reduce by 3m, remove deadwood and Ivy.

**T/00521/24/TCA** (Approve 03 December) Jasmine Cottage, the Barracks. T1 Willow: remove dead crossing branches, reduce height by 6m, finished height of 12m.

**T/00511/24/TPO** (Approve 09 December) Middlewood, 7 The Baredown. T1 Horse Chestnut, reduction.

**T/00474/24/TCA** (Pending 24 Sept) Newnham Lodge Tylney Lane. Acacia: fell and remove stump.

# Church Notices

'Journeying together, we worship God and serve the community'

[www.united-parish.org.uk](http://www.united-parish.org.uk)

<https://www.moretolife.church>

## From the Parish Registers

Interment of Ashes: Charles Rogers at St Mary's Mapledurwell on December 6th.

Funeral: Malcolm Douglas at St Mary's Mapledurwell on January 8th, followed by Thanksgiving Service at All Saints' Odiham on January 9th

## Mothers' UNION

### North Hampshire Downs MU

For the past few years, Mothers' Union has supported prisoners in Winchester Prison by buying gifts for their children at Christmas time. This Christmas we provided selection boxes to be handed out to each of the children that attend the Families Day organised by Spurgeons during December. The prisoners and their families were very grateful for these gifts, which help to bring a bit of normality to the lives of these children.

In January we met for our usual Wave of Prayer service, and on Monday 3rd February we will meet for our AGM and to start our knitting project for this year.

If you would like to find out more about Mothers' Union or our branch please contact Sue Murphy on 01252 845011 or [suemurphymubbranch@outlook.com](mailto:suemurphymubbranch@outlook.com)

## Kevin Curtis

Carpenter & Joiner



### ALL TYPES OF CARPENTRY AND JOINERY WORK

FREE ESTIMATES  
PROMPT PROFESSIONAL  
ADVICE & RELIABLE SERVICE

Evenings **01256 762 094**  
Mobile **07900 691 605**

[hellohookcarpentry@btinternet.com](mailto:hellohookcarpentry@btinternet.com)  
Checkatrade membership number 230871

## CHURCH SERVICES FEBRUARY INTO MARCH

**Sunday 09 Feb** 9am St Stephen's Up Nately BCP Holy Communion (said)  
10am St Nicholas' Newnham 1662 Morning Prayer

**Sunday 16 Feb** 9am St Mary's Greywell, CW Holy Communion  
11am St Mary's Mapledurwell, Informal Service  
11am St Swithun's Nately Scures, 1662 Morning Prayer

**Sunday 23 Feb** 10am St Nicholas' Newnham, BCP Holy Communion (said)  
11am St Stephen's Up Nately, Morning Worship

**Sunday 02 Mar** 9am St Mary's Mapledurwell, CW Holy Communion  
11am St Mary's Greywell, Morning Worship



## From the Benefice Ministry Team

This is my first letter as the new Rector of the North Hants Downs Benefice,

and so I wanted to introduce myself and say a little about our future plans.

The North Hampshire Downs Benefice is a network of 12 local churches – in Greywell, Herriard, Long Sutton, Mapledurwell, Nately Scures, Newnham, Odiham, South Warnborough, Tunworth, Up Nately, Upton Grey and Weston Patrick.

Across the Benefice we have a strong leadership team, comprising 11 vicars and lay ministers, two youth workers, and two administrators. I'm extremely grateful to Revd Simon Butler – from whom I have taken over as Rector – and who has built up this team over the last eight years. Please do take a look at our website for more info on who's who, [www.moretolife.church](http://www.moretolife.church).

My role as Rector is to serve and lead the benefice – developing its vision and mission, leading the team, and encouraging all our congregations. Previously I was vicar in Odiham, and I've now passed on that role to my colleague Revd Matt Bianchi.

At my interview last November for the role of Rector, I was asked to give my thoughts on the top three priorities for the benefice.

I believe our first priority is prayer, in every part of the benefice.

I love the verse in Psalm 127 - right in the middle of the Bible - that says this: 'Unless the Lord builds the house, the builders labour in vain.'

As we set our vision and plans for the next few years, we need to make sure that we're listening to and following God, and joining in with what he's doing in this place.

Our second priority is growth in our churches – both in maturity as Christian disciples, and in numbers.

You may have noticed that our logo for the benefice for the last few years has been the word 'More+'. We are already a joyful community of Christians in this place – but we believe that God is calling us to so much more over the coming years.

And our third priority is unity. Unless we're united as one benefice, focused on God, working together as a team towards a common vision, we won't see the growth that we believe he is calling us to.

My licensing as Rector only took place last month, on 14th January in All Saints Odiham, so it's very early days to be talking about plans.

But Jesus said that he came in order that we might have life, life in abundance, and that fills me with confidence that we have so much to look forward to together.

I look forward to meeting you in my new role as Rector, and with best wishes,

*Chris*

Revd Chris Dudgeon  
Rector, North Hants Downs Benefice  
[chris@moretolife.church](mailto:chris@moretolife.church)  
[www.moretolife.church](http://www.moretolife.church)

## The Table

FREE COMMUNITY MEAL



North Warnborough Village Hall

Generally held on  
2nd and 4th Sunday  
of the month.

Please note, NOT on  
23 February

From  
**5PM**



Contact Matt at [matt@moretolife.church](mailto:matt@moretolife.church)



Helen Chatfield  
 Youth Outreach Worker  
 More to Life network of Churches  
 North Hampshire Downs Benefice

## KIDZONE

Hi everyone,

Brrr... as I write this, there's snow on the ground and the thermometer is below zero. What better time to catch up on Christmas movies you might have missed?

I don't know about you, but as a family, we have a list of movies that are a 'must see' over Christmas and, if I'm honest, it doesn't change much from year to year. But that's all about to change with a brand new movie from November last year. I wonder if you watched it? It's called 'The Best Christmas Pageant Ever'.

This movie tells the story of the Herdman kids, six siblings who terrorize the students (and grown-ups) in their town and school. One Sunday, they find themselves in church because they heard there were free treats ... and before they know it, they're playing the leads in the town's Christmas pageant.

These kids are apparently 'The worst kids in the world', and as they get up to their antics, the regular members of the church get more and more fed up and want them to leave. But as we go through the film, we learn something

else very important about The Herdmans, and maybe why they behave like this – they have a really tough life. No-one has ever really cared about them. They don't have people who believe in them. They've never even heard of the Christmas story!

So when one family shows them kindness, allows them into their lives, it literally turns their lives upside down. It totally transforms them! Love changes them for ever. The daughter in this family struggles a bit though. She's always been Mary in the past. She thinks it will spoil the pageant to have these naughty children involved. But her mum sits her down and teaches her a really important lesson – that Christmas is for everyone: even the Herdmans!

Sometimes it's easy to look at someone and think 'They look different from me', or 'They aren't doing things in the same way I would', or 'They don't say things like I do', and think that somehow they're not good enough. Isn't it amazing that Jesus says that at Christmas He came for everyone – even for those we find tricky?

Sorry this has been a bit like a movie review, and I know Christmas is over... but, I have two challenges for you this month.

1. WATCH THIS FILM! It may just change your life!
2. Do you have a kindness superpower? Can your kindness to others be what it takes to totally change them?

See you next time!

*Helen C*



**Memories from Chris Dudgeon's licensing as Rector by Bishop David at All Saints' Odiham on 14 January 2025**

PHOTOS courtesy of Gina Stead and Carol Gibbons





## NEW VOLUNTEERING OPPORTUNITY FOR 2025

Odiham Cottage Hospital's Befriending Service is a volunteer-led service run and managed by the Hospital and covers the areas of Odiham, Hook, Hartley Wintney, Old Basing, Lychpit and surrounding villages.

Our clients are those who are lonely and isolated due to living with a long-term health condition, or are receiving palliative care.

The service recruits, trains and supports volunteers who on a weekly basis visit people in their homes, as well as provide befriending via the telephone.

All clients are referred to the service through their GP practice, community health team or another medical professional.

We are currently recruiting new volunteers to be Befrienders. For just two hours a week, you can make a real difference in someone's life within your local community.

For more information or an application pack, please contact: Tina Birch, Befriending Manager, tel 01256 393609 or email [befriending@odihamcottagehospital.org.uk](mailto:befriending@odihamcottagehospital.org.uk)

## BASINGSTOKE CHORAL SOCIETY SPRING CONCERT

with Croyden Philharmonic Choir

**Sunday 30 March, 7.30pm**  
**Anvil Theatre, Basingstoke**

### A SEA SYMPHONY

Toward the Unknown Region

RALPH VAUGHAN WILLIAMS

Four Sea Interludes from Peter Grimes

BENJAMIN BRITTEN

To book: [anvilarts.org.uk](http://anvilarts.org.uk)  
or 01256 844244

## PLEASE CONTRIBUTE STORIES & PHOTOS of local interest to the Villager

CONTACT Editor Susan Turner 07515 777060 [su.newnham@gmail.com](mailto:su.newnham@gmail.com);

Mapledurwell News and Distribution  
Lorna Cuthill 354651;

Up Nately News Liz Preece 762059;

Church Benefice  
[www.moretolife.church](http://www.moretolife.church)

## HARE COURSING SENTENCING GUIDELINES CONSULTATION

The Sentencing Council is conducting a public consultation around sentencing guidelines for those convicted of hare coursing offences.

As part of the consultation, they are keen to hear from anyone with an interest in sentencing for these offences, which includes victims and their families, as well as other interested parties. Beyond the harm done to animals, hare coursing activities often involve criminal damage to land and property, and aggressive and threatening behaviour towards residents.

See the Sentencing Council website: consultation closes on 25 April 2025.

[www.sentencingcouncil.org.uk/publications/item/hare-coursing-sentencing-guidelines-consultation](http://www.sentencingcouncil.org.uk/publications/item/hare-coursing-sentencing-guidelines-consultation).

A Hants Alert message from Jack Backwell, Police, Corporate Communications Officer, Hants & IofW

## POLICE & CRIME COMMISSIONER ROUND TABLE

Notes from meeting of 20 January, chaired by County Cllr Juliet Henderson

### Three key new priorities for Police & Crime Plan:

#### Shoplifting, Roads safety, Rural crime.

Re traffic speed though rural Villages, parishes might be able to contribute to installation and running costs of speed cameras, though details to be worked through, splitting costs between county, police and parish.

PCC Donna Jones is funding two more speed vans – all speed vans work across the county and are focussed on high risk routes, they're prioritised to the routes that have already had accidents recorded.

Re the pending devolution, Donna said that the function of PCC is exercised by a deputy mayor, as such would be tied to mayoral elections.

## GOOD HEATH MATTERS TO ALL OF US

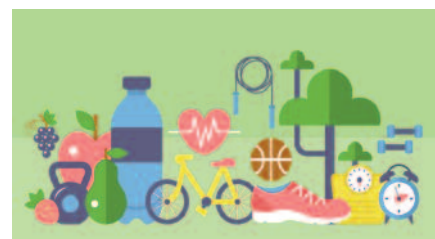
The pressures on our NHS have never been greater, and more and more of us feel that there is a growing need to take responsibility for our own health and well-being.



Our 60+ activity groups already contribute as they provide regular opportunities for our members to stay active physically and mentally but above all socially. Indeed, an outing to London is already arranged to see Christmas Cracker 2025 in December!

Taking regular exercise is very popular with our u3a family, with over 20 groups offering a range of physical activities, some having multiple groups eg there are three Pilates groups.

However, before we sound too good to be true, there are five Wine Appreciation groups!



Increasingly, however, it is being recognised that our Lifestyles play an important part in our well-being. So, we are now planning in a Health and Wellbeing Study Day in April with the focus on 'Ears, Eyes and Other Essentials'. We hope this will lead to regular Lifestyle presentations.

Loneliness can also be a major factor affecting our well-being and our long-established MOTO group offers regular opportunities during the month for 'Members on their Own' to socialise. They also organise special events eg they celebrated the Chinese New Year with a meal, and there are even MOTO holidays, which are becoming increasingly popular.

Underpinning so much of our understanding about health is science. The Science and Technology's January presentation was about 'Vaccines' with Dr Stephen Lockhart, who recently retired from a senior position in Pfizer.

If you would like to get involved, we would love to hear from you.

To find out more, please visit our website

<https://odiham.u3asite.uk/>

